

OPERATING MANUAL FOR UNDER PLASTER SWITCH WITH RADIO RECEIVER DC 318

Failure to comply with this Manual may result in injury or death. Keep the Manual for reference.

1. TECHNICAL SPECIFICATIONS

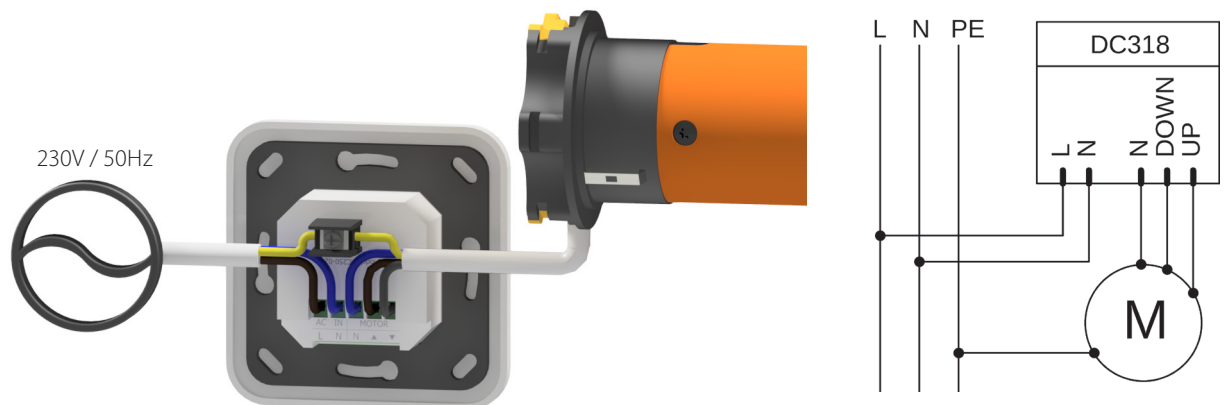


Power supply:	230 VAC / 50 Hz
Frequency:	433.92 MHz
Radiated power:	10 miliwat (mW)
Operating temperature:	~ -10°C ~ +55°C
Average range:	200 meters (in open space), 35 meters (inside buildings)
Dimensions:	80 x 80 (mm)

Applied for max 50 Nm tubular motor
Works exclusively with motors without built-in radio control.
Works with all DC series transmitters included in the ALUPROF S.A. offer.
Possibility to program up to 20 transmitters, Each next transmitter will erase the first one.

Company reserves the tolerance of catalog data due the different conditions usage.

2. ILLUSTRATIVE SWITCH CONNECTION



NOTE

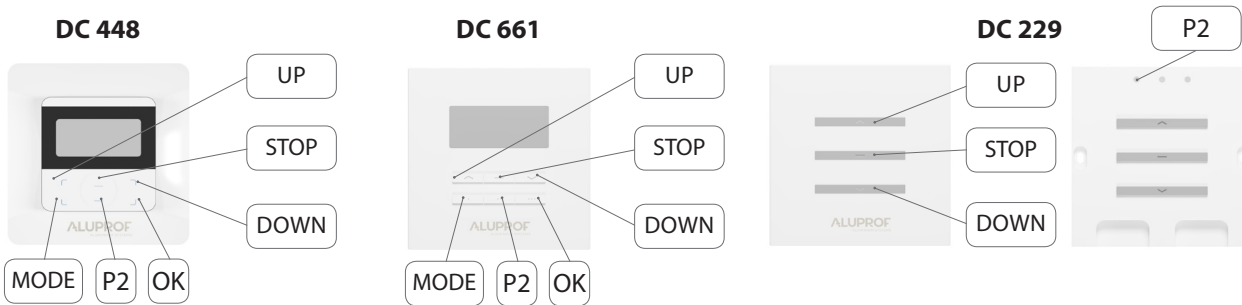
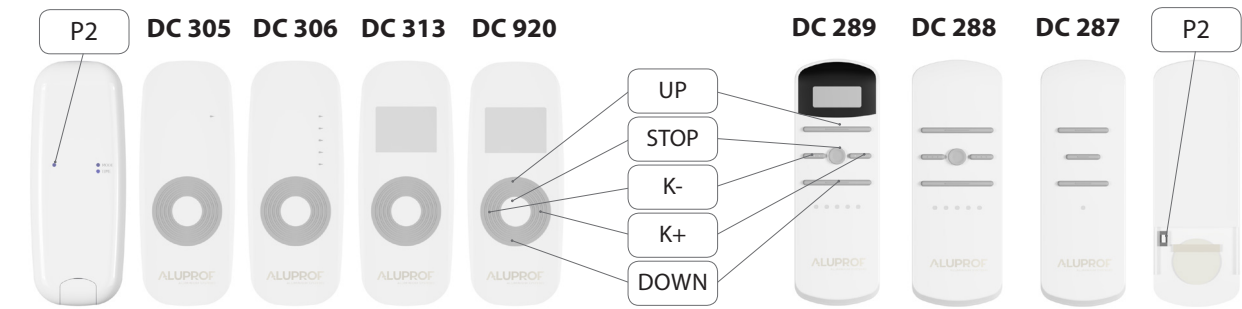
- Installation of the switch should be carried out by authorized persons (e.g. ECS authorisations to operate electrical devices up to 1 kV).
- The switch should be powered by a separate circuit and protected by a quick fuse for example: circuit breaker type B10.
- The switch is designed for use in dry rooms and should not be exposed to direct weather conditions.



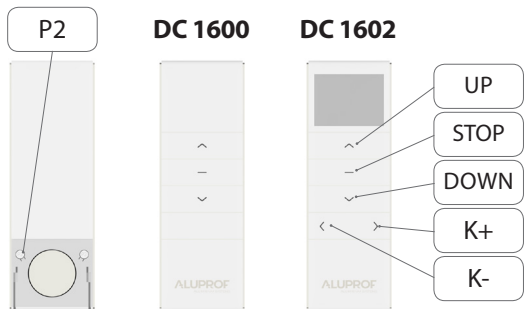
In accordance with the provisions of the Directive of the European Parliament and of the Council 2012/19 / EU of 4 July 2012 on waste electrical and electronic equipment (WEEE), it is prohibited to place of used equipment together with other wastes, marked with crossed out wheeled bin symbol. The users are obliged to transfer their used equipment to a designated collection point for proper processing. The marking means, at the same time, that the equipment was put on the market after 13 August 2005. These legal obligations have been introduced to reduce the amount of waste generated from waste electrical and electronic equipment and to ensure an appropriate level of collection, recovery and recycling. The equipment does not contain any dangerous components, which would have any particularly negative impact on the environment and human health.



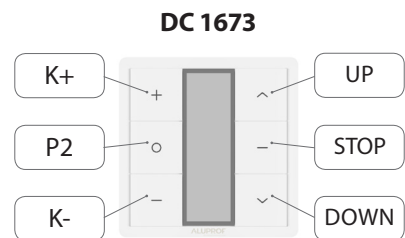
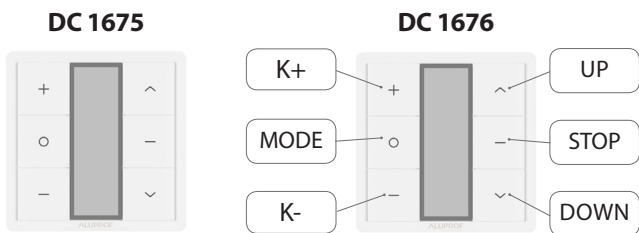
3. REMOTE CONTROLLERS



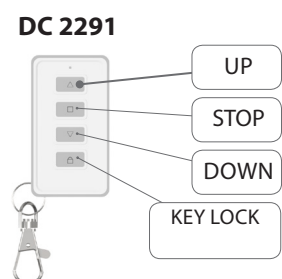
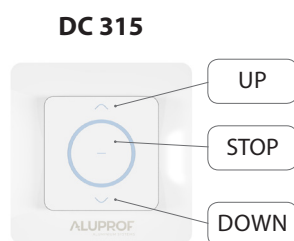
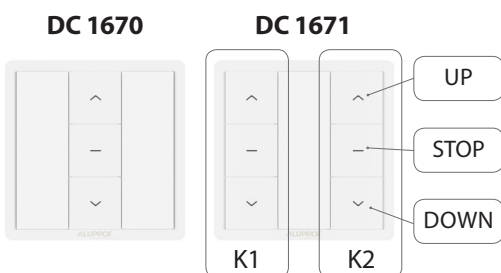
LEGEND
UP - activation of this button will move curtain up.
DOWN - activation of this button will move curtain down.
P2 - activation of this button will switch to programming mode.
K+ - activation of this button will switch to the next channel.
K- - activation of this button will switch to the previous channel.
K1 - first channel buttons.
K2 - second channel buttons.
MODE - button activates the settings of the clock and date.



! Activation of the "P2" button in DC1675, DC1676 wall transmitters is performed by a combination of both keys "MODE" and "K+".



! Activation of the "P2" button in remote controller DC1670, DC1671, DC315, DC2291 is performed by a combination of both keys "STOP" and "UP".



4. MEMORIZING THE TRANSMITTER



Press and hold simultaneously "UP" and "DOWN" buttons with power supply on. The indicator light is on.



After 3 seconds when the indicator light turns off - release the buttons.



Press "STOP" button. The indicator light turns on.



Press the „UP" button on the transmitter.



Indicator light flashes 3 times.



The transmitter has been added.

5. ERASING ONE TRANSMITTER.



Press and hold simultaneously "UP" and "DOWN" buttons with power supply on. The indicator light is on.



After 3 seconds when the indicator light turns off - release the buttons.



Press "STOP" button. The indicator light turns on.



Press the „DOWN" button on the transmitter.



Indicator light flashes 3 times.



The transmitter has been deleted.

6. CHANGING THE OPERATING MODE (PULSED / CONTINUOUS)



Press and hold simultaneously "UP" and "STOP" buttons with power supply on. The indicator light is on.

After 6 seconds indicator light flashes 3 times.

The setting has been saved.

 Pulse mode enables, i.a. step control of venetian blind.

7. RESTORE FACTORY SETTINGS



Press and hold simultaneously "STOP" and "DOWN" buttons with power supply on. The indicator light is on.

After 6 seconds indicator light flashes 3 times.

Factory settings restored