

PROGRAMMING MANUAL FOR AC250-02 UNDER PLASTER SWITCH WITH RADIO RECEIVER

1. TECHNICAL SPECIFICATIONS



Power supply:	230 VAC / 50 Hz
Frequency:	433.92 MHz
Operating temperature:	~ -20°C - ~ +55°C
Protection degree:	IP30
Average range:	80 meters (in open space), 20 meters (inside buildings)

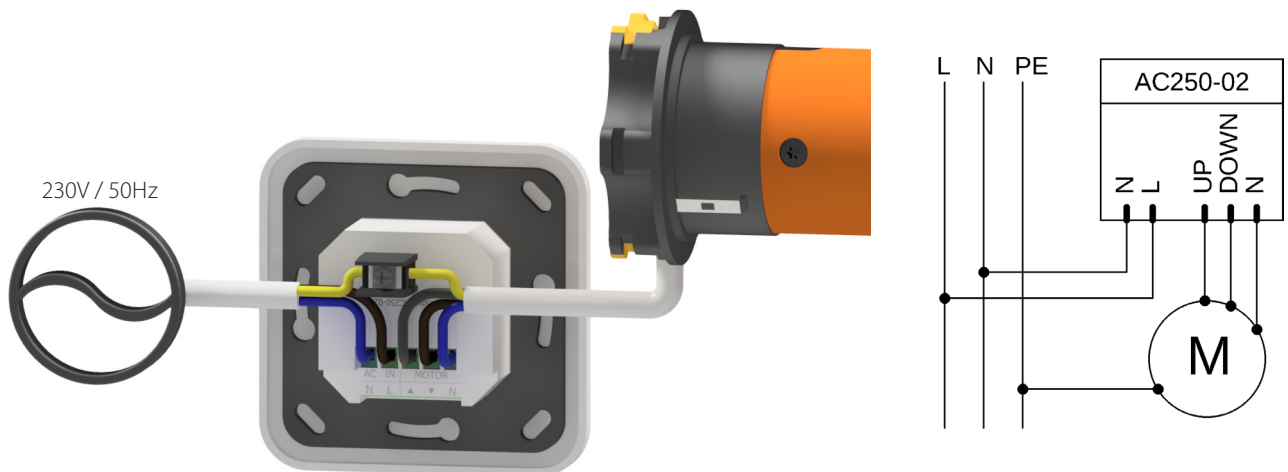
Works exclusively with motors without built-in radio control.

Works with all AC series transmitters included in the ALUPROF S.A. offer.

UP To 20 transmitters can be programed to one motor Each next transmitter will overwrite the first one.

Company reserves the tolerance of catalog data due the different conditions usage.

2. ILLUSTRATIVE SWITCH CONNECTION



NOTE

- Installation of the switch should be carried out by authorized persons (e.g. ECS authorisations to operate electrical devices up to 1 kV).
- The switch should be powered by a separate circuit and protected by a quick fuse for example: circuit breaker type B10.



In accordance with the provisions of the Directive of the European Parliament and of the Council 2012/19 / EU of 4 July 2012 on waste electrical and electronic equipment (WEEE), it is prohibited to place of used equipment together with other wastes, marked with crossed out wheeled bin symbol. The users are obliged to transfer their used equipment to a designated collection point for proper processing. The marking means, at the same time, that the equipment was put on the market after 13 August 2005. These legal obligations have been introduced to reduce the amount of waste generated from waste electrical and electronic equipment and to ensure an appropriate level of collection, recovery and recycling. The equipment does not contain any dangerous components, which would have any particularly negative impact on the environment and human health.

3. REMOTE CONTROLLERS

AC134-06

AC134-02

AC134-01

AC133-05

AC133-02

AC133-01

AC116-04

AC116-03

AC136-01

AC136-06

AC136-16

AC129-04

AC129-01

AC127-01

AC127-06

AC127-16

AC140-16

AC140-06

AC140-01

UP
- activation of this button will move curtain up.

STOP
- activation of this button will stop curtain.

DOWN
- activation of this button will move curtain down.

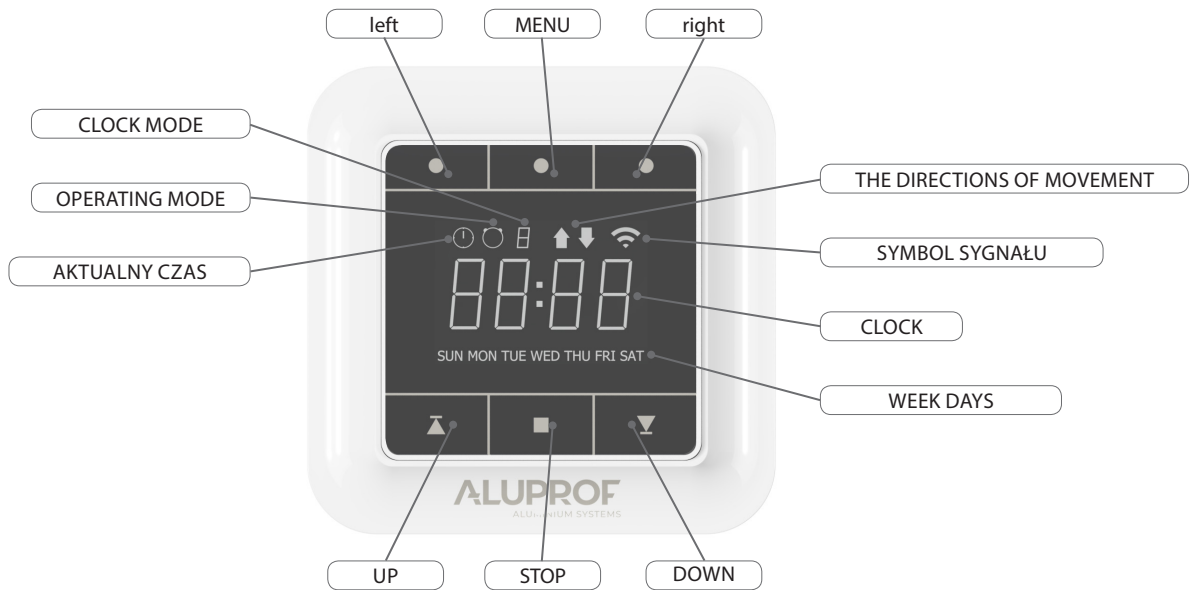
K1/K2/K3/K4
- individual channel buttons.

K-
- activation of this button will switch to the previous channel.

K+
- activation of this button will switch to the next channel.

P2
- activation of this button will switch to programming mode.

4. DIAGRAM OF THE FRONT PANEL



5. OPERATING MODE CHANGE

Press and hold the "LEFT" button for 1 second.

Next holding of the button changes the mode between "Manual" (M), "Timer Mode" (T), "Random Timer Mode" (T ±).

To select one of the three options from "Timer Mode" (T), press and hold the "RIGHT" button for 1 second.

In "Random Timer Mode" (T ±) the same option is always active that is active in "Timer Mode" (T).

- ! Option T1 - setting the same opening / closing hours for each day.
- ! Option T2 - setting individual opening / closing hours for each day.
- ! Option T3 - setting individual opening / closing hours at the weekend and the same for other days.

6. SETTING THE CURRENT TIME AND DAY OF THE WEEK

Switch to "Manual" (M) mode.

Press and hold the "MENU" button for 4 seconds. The hour will flash.

Press "LEFT" / "RIGHT" to select the position to change. Pressing 'UP' / 'DOWN' change its value.

To save the settings press the "MENU" button.

- ! The setting mode will close after 10 seconds of inactivity and the changes will not be saved.

7. TIMER SETTING



Switch to "Timer" (T) mode.



Select the required "Timer Mode" (T) option.



Press and hold the "MENU" button for 4 seconds. The hour will flash.



The arrow on the display indicates the direction in which the settings are being made.



Press "LEFT" / "RIGHT" to select the position to change. Pressing "UP" / "DOWN" change its value.



To save the settings press the "MENU" button. The arrow will change to the opposite direction



Repeat the previous two steps until none of the arrows are displayed.



The timer has been set.



The setting mode will close after 10 seconds of inactivity and the changes will not be saved.

8. LOCKING OF THE BUTTONS



Press and hold the "STOP" button for 4 seconds.



After 2 seconds, "SET" will be displayed.



After 4 seconds, "LOCK" will be displayed. Release the button.



The buttons have been blocked.

9. UNLOCKING OF THE BUTTONS



Press and hold the "STOP" button for 4 seconds.



After 2 seconds, "SET" will be displayed.



After 4 seconds, "Good" will be displayed. Release the button.



The buttons have been unlocked.

10. PROGRAMMING OF THE FIRST TRANSMITTER.



Press and hold the "RIGHT" button for 1 second. The signal symbol will flash.



Press the "UP" button on the transmitter.



The signal symbol will flash quickly 3 times.



The transmitter has been added.

11. PROGRAMMING OF THE ANOTHER TRANSMITTER



Additional transmitters can be programmed according to point 9. For the AC116-04 transmitter, instead of the "UP" button, press the selected channel number twice.



Press and hold the "STOP" button on the transmitter already added for 6 seconds. The signal symbol will flash.



On the new transmitter press the "UP" button.



The signal symbol will flash quickly 3 times.



The transmitter has been added.

12. MODE CHANGE (WITH OR WITHOUT SUPORT)



Press and hold the "RIGHT" button for 1 second. The signal symbol will flash.



Press the "STOP" button on the transmitter.



The signal symbol will flash quickly 3 times.



The setting has been saved.



Press and hold the "LEFT" and "RIGHT" buttons for 4 seconds.



After 2 seconds, "SET" will be displayed.



After 4 seconds, "INCh" (without support) or "CONt" (with support) will be displayed. Release the buttons.



The setting has been saved.



Repeating of the procedure returns to the previous operating mode.

13. PROGRAMMING THE DIRECTION OF MOVEMENT



Press and hold the "RIGHT" button for 1 second. The signal symbol will flash.



Press the "DOWN" button on the transmitter.



The signal symbol will flash quickly 3 times.



The setting has been saved.



Press and hold the "UP" and "DOWN" buttons for 4 seconds.



After 2 seconds, "SET" will be displayed.



After 4 seconds, "UP" or "dn" will be displayed. Release the buttons.

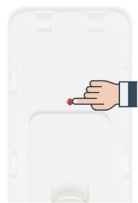


The setting has been saved.

14. ERASING ONE TRANSMITTER.



Press and hold the "RIGHT" button for 1 second. The signal symbol will flash.



On the transmitter press the "P2" button.



The signal symbol will flash quickly 3 times.



The transmitter has been deleted.

15. ERASING ALL OF THE TRANSMITTERS.



Press and hold the "RIGHT" button for 6 seconds. The signal symbol will flash.



After 6 seconds, the signal symbol will flash quickly 3 times.



The transmitters have been deleted.